

I.T. Guide on available Redistricting Information Files

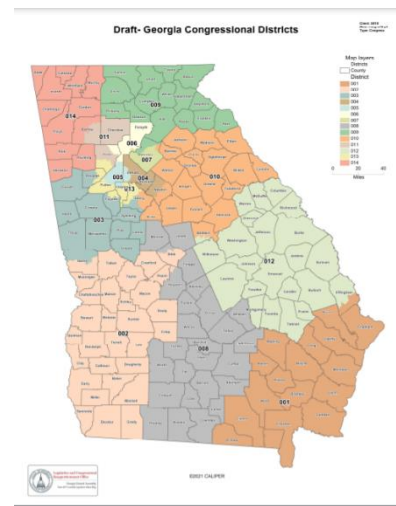
This document provides an overview of the different resources provided by the Legislative and Congressional Reapportionment Office to provide information during the redistricting process and how they are supported by the I.T. Department.

The following resources are found on their web page at www.legis.ga.gov/joint-office/reapportionment and can be used throughout the redistricting process:

The District Packet

These PDF files contain color coded representations of each district, as well tables for the Population Summary. The Metro Atlanta area is further broken out in detail on Page 2.

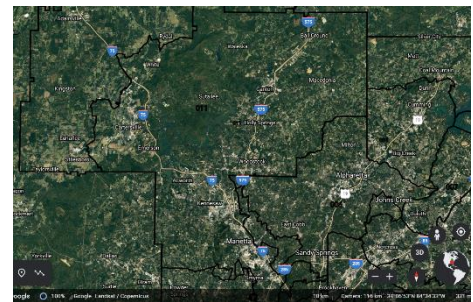
This file should give you a good overview of a redistricting map/plan. These files do not require any special software other than a PDF reader. Most modern browsers ship with Acrobat Reader or other similar software installed as plugins.



The Google Earth Overlay

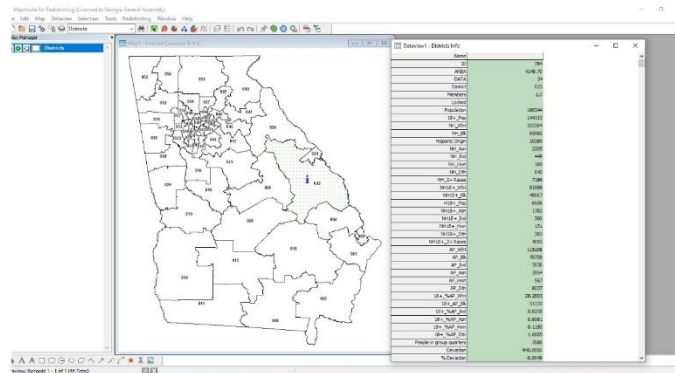
These KML files will overlay the plan over a Google Earth representation, allowing one to zoom in all the way to street level. You will either need Google Desktop Pro installed on your laptop, or you can use the web based <https://earth.google.com/> to view these files.

I.T. has a PDF document that explains how to use the web-based version. The Google Earth Pro desktop application *is* easier to use however. If you prefer the Google Earth Pro program, simply submit a ticket to Helpdesk and it can be installed over the network.



The GIS Shape files

These files are mainly “data” files. They are for use with GIS software products and are provided mainly for the use of local governments to be able to import the map data to work on other projects. These GIS software products are either very expensive or free and open-source – but in both cases they require a fairly large degree of training to use properly. There isn’t anything in these files that is not available in the corresponding PDF or Google Earth files. The General Assembly does not supply GIS software at this time. If you have any questions, please direct them to the Legislative and Congressional Reapportionment Office.



Other files

Block Equivalency Files are another data format that is provided for GIS professionals. These files have little relevance for most users. These are very basic data files that simply assign every block in the state to a district in an Excel format. No other data is provided in these files.