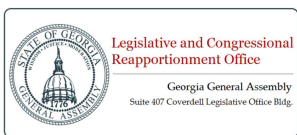
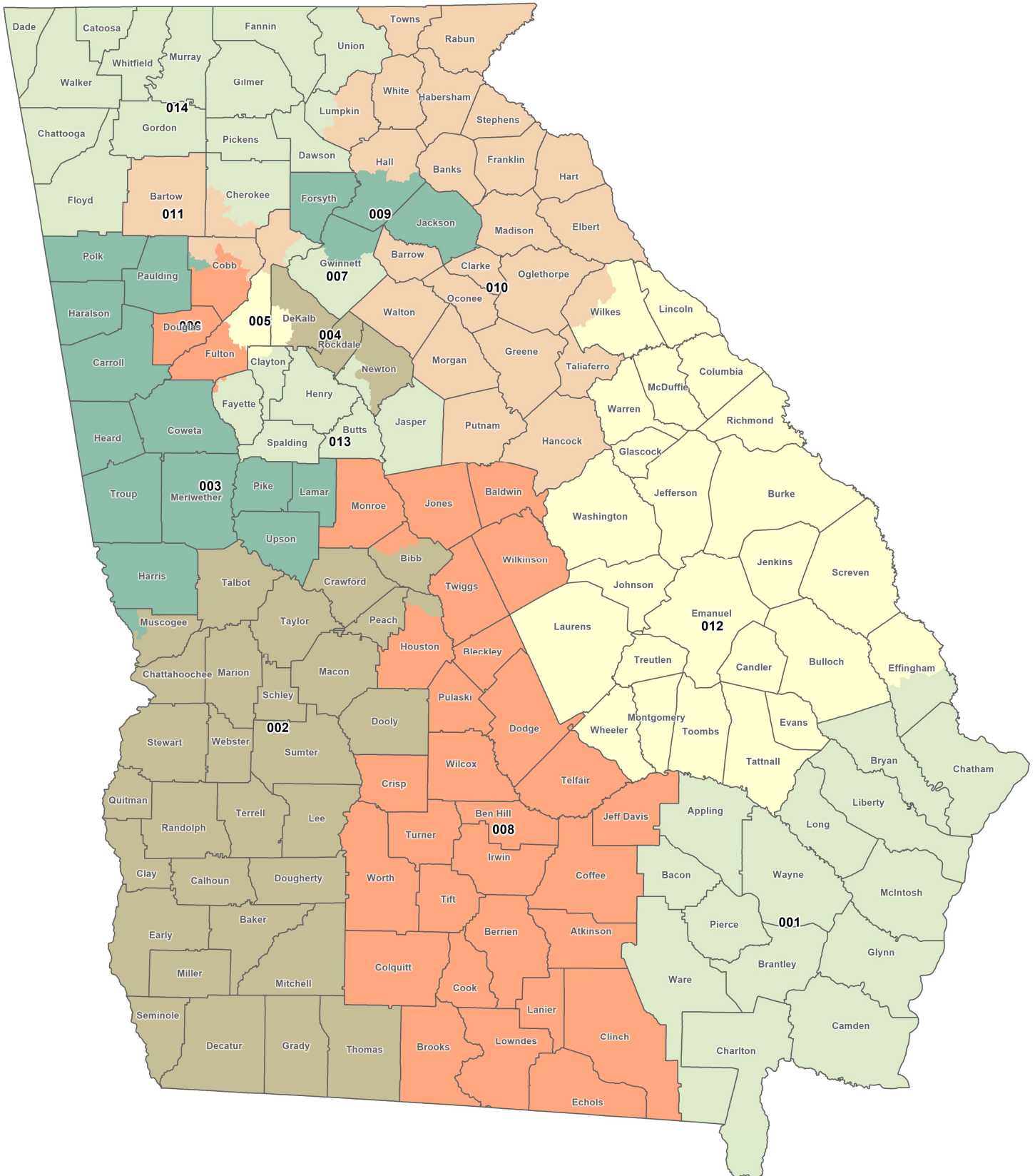
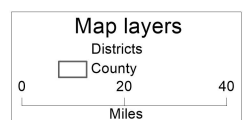


GHDC & GSDC- Proposed Georgia Congressional Districts

Client: H143
Plan: GHDC-GSDC-Congress-2023
Type: House

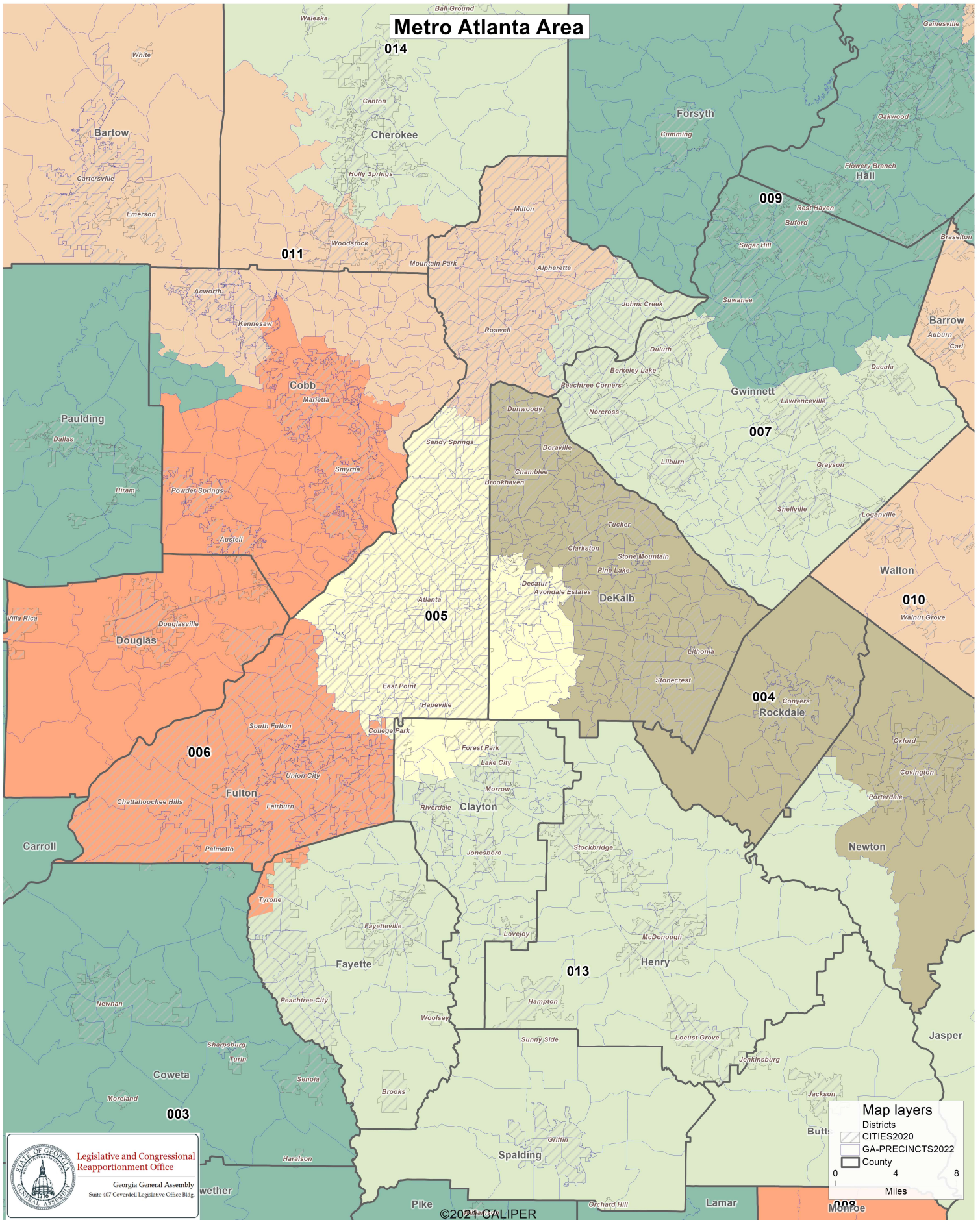


Legislative and Congressional
Reapportionment Office
Georgia General Assembly
Suite 407 Coverdell Legislative Office Bldg.



GHDC & GSDC- Proposed Georgia Congressional Districts

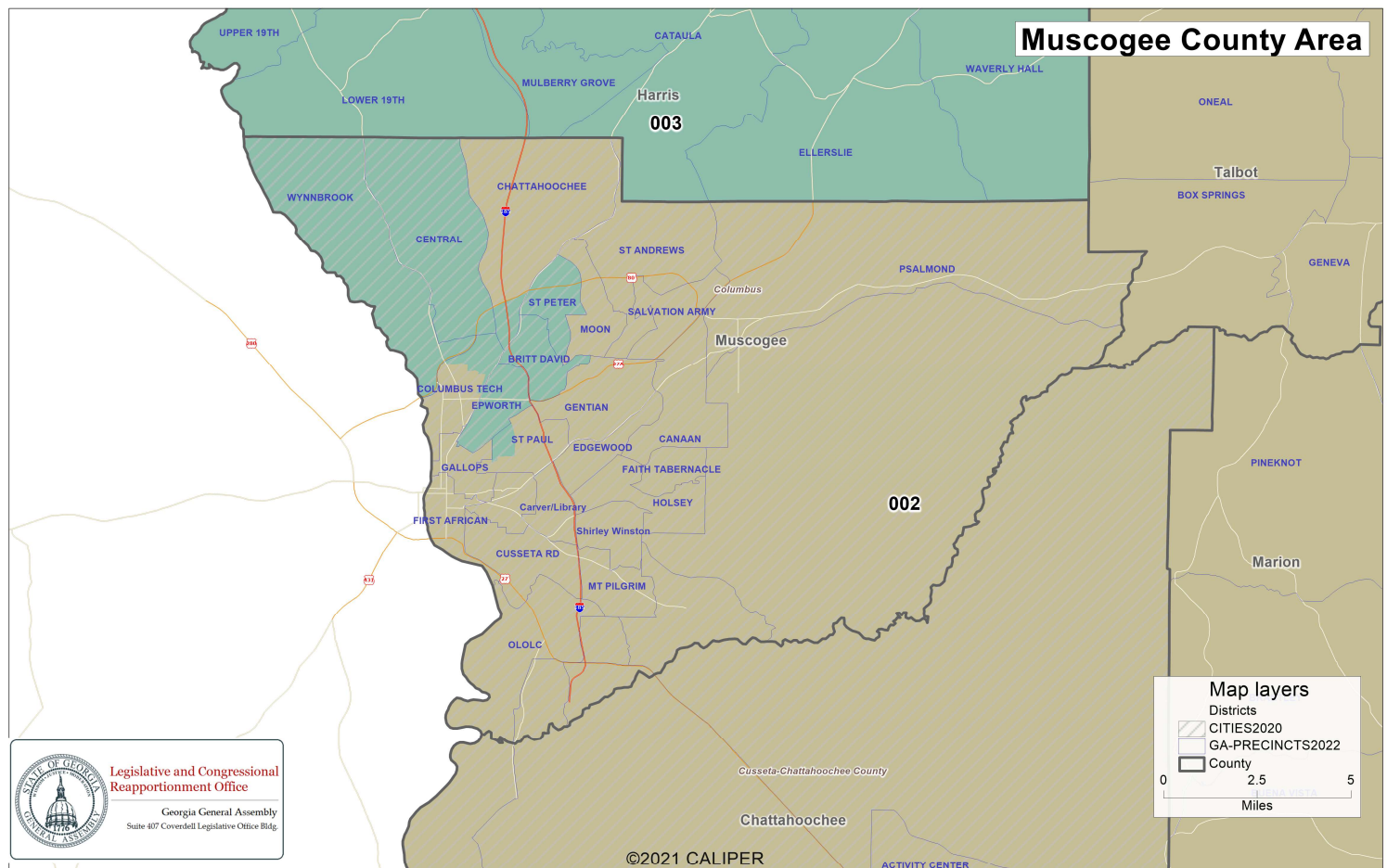
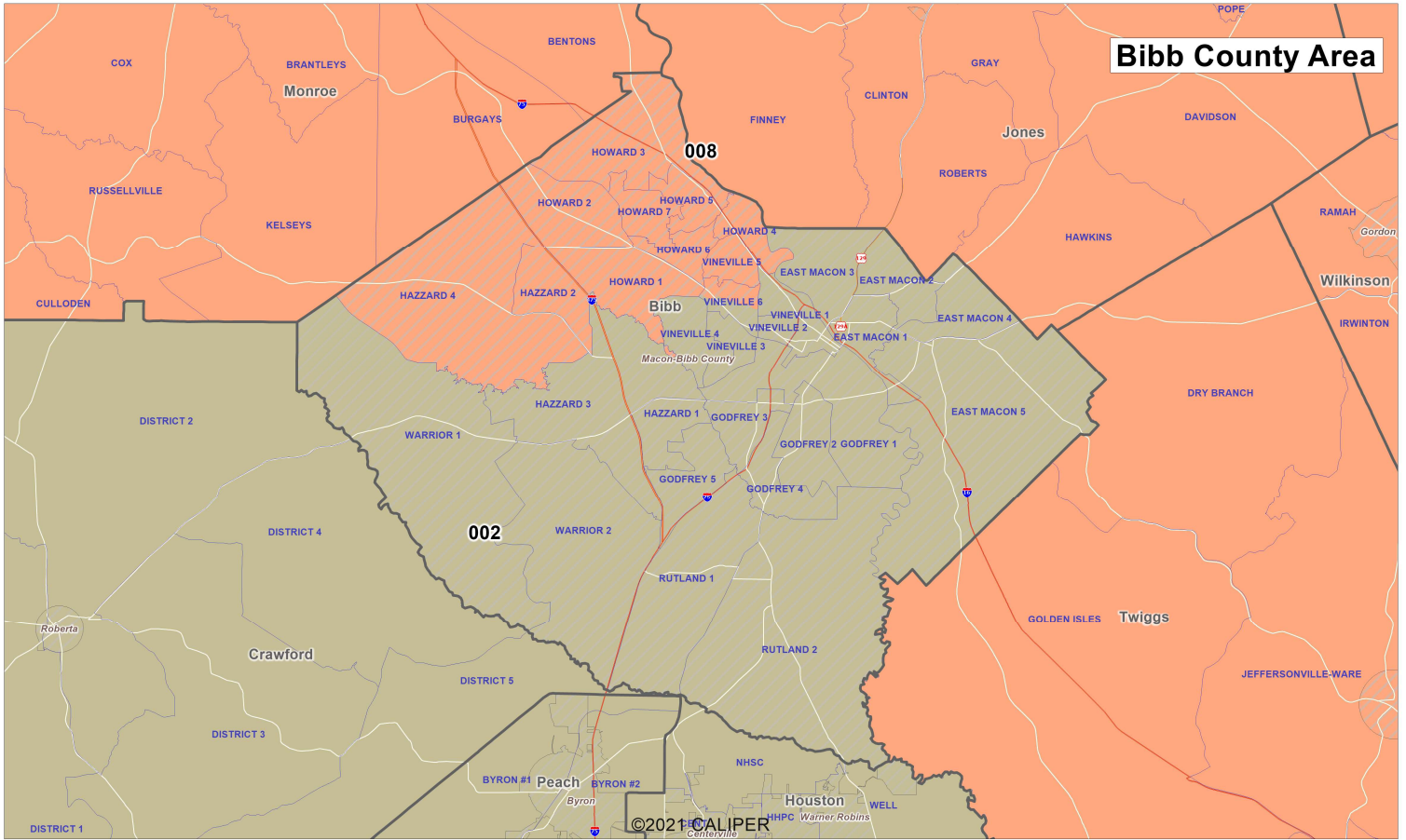
Client: H143
 Plan: GHDC-GSDC-Congress-2023
 Type: House




Legislative and Congressional Reapportionment Office
 Georgia General Assembly
 Suite 407 Coverdell Legislative Office Bldg.

GHDC & GSDC- Proposed Georgia Congressional Districts

Client: H143
Plan: GHDC-GSDC-Congress-2023
Type: House



Legislative and Congressional Reapportionment Office
Georgia General Assembly
Suite 407 Coverdell Legislative Office Bldg.

Map layers

- Districts
- CITIES2020
- GA-PRECINCTS2022
- County

0 2.5 5 Miles

Population Summary

District	Population	Deviation	% Devn.	[18+_Pop]	[% 18+_Pop]	[% NH_Wht]	[% NH_Blk]	[% Hispanic Origin]	[% NH_Ind]	[% NH_Asn]	[% NH_Hwn]	[% NH_Oth]	[% NH_2+ Races]
001	765,137	1	0.00%	589,266	77.01%	57.59%	27.54%	7.75%	0.24%	2.19%	0.16%	0.44%	4.1%
002	765,137	1	0.00%	587,555	76.79%	39.94%	49.03%	5.95%	0.21%	1.34%	0.1%	0.34%	3.09%
003	765,136	0	0.00%	580,047	75.81%	67.65%	19.63%	6.53%	0.22%	1.47%	0.05%	0.46%	4%
004	765,136	0	0.00%	590,640	77.19%	27.71%	50.47%	11.47%	0.16%	6.13%	0.04%	0.65%	3.38%
005	765,137	1	0.00%	621,515	81.23%	35.79%	48.53%	7.38%	0.16%	4.09%	0.04%	0.52%	3.49%
006	765,136	0	0.00%	587,242	76.75%	29.54%	48.39%	14.17%	0.18%	3.03%	0.04%	0.89%	3.77%
007	765,137	1	0.00%	566,934	74.1%	29.52%	28.11%	23.77%	0.16%	14.26%	0.04%	0.69%	3.45%
008	765,136	0	0.00%	585,857	76.57%	57.91%	29.72%	7.17%	0.19%	1.56%	0.05%	0.31%	3.09%
009	765,137	1	0.00%	564,255	73.75%	56.11%	10.5%	16.78%	0.16%	12.27%	0.04%	0.51%	3.63%
010	765,136	0	0.00%	602,116	78.69%	71.66%	13.99%	8.01%	0.2%	2.08%	0.03%	0.44%	3.6%
011	765,137	1	0.00%	588,771	76.95%	64.33%	12.17%	10.65%	0.17%	7.31%	0.03%	0.76%	4.58%
012	765,136	0	0.00%	588,119	76.86%	52.13%	36.12%	5.63%	0.21%	1.83%	0.11%	0.36%	3.61%
013	765,135	-1	0.00%	576,337	75.32%	33.08%	49.66%	9.33%	0.19%	3.6%	0.05%	0.63%	3.48%
014	765,135	-1	0.00%	591,620	77.32%	77.85%	4.59%	12.26%	0.22%	1.02%	0.03%	0.31%	3.72%

Total: 10,711,908

Ideal District: 765,136

Summary Statistics:

Population Range:	765,135 to 765,137
Ratio Range:	0.00
Absolute Range:	-1 to 1
Absolute Overall Range:	2
Relative Range:	0.00% to 0.00%
Relative Overall Range:	0.00%
Absolute Mean Deviation:	0.57
Relative Mean Deviation:	0.00%
Standard Deviation:	0.70

Population Summary

District	Population	Deviation	% Devn.	[18+_Pop]	[% 18+_Pop]	[% NH18+_Wht]	[% NH18+_Blk]	[% H18+_Pop]	[% NH18+_Ind]	[% NH18+_Asn]	[% NH18+_Hwn]	[% NH18+_Oth]	[% NH18+_2+ Races]
001	765,137	1	0.00%	589,266	77.01%	60.41%	26.44%	6.78%	0.26%	2.36%	0.14%	0.37%	3.24%
002	765,137	1	0.00%	587,555	76.79%	42.73%	47.62%	5.12%	0.23%	1.41%	0.09%	0.28%	2.53%
003	765,136	0	0.00%	580,047	75.81%	69.98%	19.2%	5.49%	0.22%	1.5%	0.05%	0.37%	3.19%
004	765,136	0	0.00%	590,640	77.19%	30.11%	50.11%	9.98%	0.15%	6.08%	0.03%	0.58%	2.95%
005	765,137	1	0.00%	621,515	81.23%	37.92%	47.14%	6.67%	0.16%	4.53%	0.04%	0.48%	3.07%
006	765,136	0	0.00%	587,242	76.75%	32.76%	47.51%	12.22%	0.19%	3.2%	0.04%	0.82%	3.25%
007	765,137	1	0.00%	566,934	74.1%	32.78%	27.35%	21.27%	0.16%	14.97%	0.04%	0.59%	2.85%
008	765,136	0	0.00%	585,857	76.57%	60.52%	28.84%	6.1%	0.2%	1.6%	0.05%	0.25%	2.43%
009	765,137	1	0.00%	564,255	73.75%	59.5%	10.42%	14.79%	0.16%	11.79%	0.04%	0.43%	2.88%
010	765,136	0	0.00%	602,116	78.69%	74.26%	13.43%	6.62%	0.22%	2.09%	0.03%	0.38%	2.97%
011	765,137	1	0.00%	588,771	76.95%	66.91%	12.07%	9.37%	0.17%	7.07%	0.03%	0.68%	3.7%
012	765,136	0	0.00%	588,119	76.86%	54.65%	35.06%	4.87%	0.22%	1.95%	0.1%	0.3%	2.86%
013	765,135	-1	0.00%	576,337	75.32%	35.94%	48.65%	8.01%	0.19%	3.71%	0.05%	0.56%	2.88%
014	765,135	-1	0.00%	591,620	77.32%	80.77%	4.5%	10.02%	0.24%	1.03%	0.03%	0.25%	3.16%

Total: 10,711,908
Ideal District: 765,136

Summary Statistics:

Population Range:	765,135 to 765,137
Ratio Range:	0.00
Absolute Range:	-1 to 1
Absolute Overall Range:	2
Relative Range:	0.00% to 0.00%
Relative Overall Range:	0.00%
Absolute Mean Deviation:	0.57
Relative Mean Deviation:	0.00%
Standard Deviation:	0.70

Population Summary

*Census designation "AP" denotes respondents who are Any or Part of a race category; respondents may fall into more than one category.

District	Population	Deviation	% Devn.	[18+_Pop]	[% 18+_Pop]	[% 18+_AP_Wht]	[% 18+_AP_Blak]	[% H18+_Pop]	[% 18+_AP_Ind]	[% 18+_AP_Asn]	[% 18+_AP_Hwn]	[% 18+_AP_Oth]	[% 18+_2+ Races]
001	765,137	1	0.00%	589,266	77.01%	66.62%	28.17%	6.78%	2%	2.99%	0.29%	5.46%	5.16%
002	765,137	1	0.00%	587,555	76.79%	46.83%	49.29%	5.12%	1.54%	1.89%	0.22%	4.39%	3.85%
003	765,136	0	0.00%	580,047	75.81%	75.67%	20.47%	5.49%	2.18%	1.95%	0.13%	4.89%	5%
004	765,136	0	0.00%	590,640	77.19%	35.75%	52.77%	9.98%	1.73%	6.72%	0.13%	9.16%	5.81%
005	765,137	1	0.00%	621,515	81.23%	43.52%	49.6%	6.67%	1.35%	5.39%	0.14%	5.81%	5.33%
006	765,136	0	0.00%	587,242	76.75%	40.47%	50.23%	12.22%	1.88%	3.77%	0.13%	11.08%	7.09%
007	765,137	1	0.00%	566,934	74.1%	43.27%	29.82%	21.27%	2.07%	15.85%	0.16%	18.77%	9.39%
008	765,136	0	0.00%	585,857	76.57%	65.6%	30.04%	6.1%	1.63%	2.03%	0.14%	4.83%	4%
009	765,137	1	0.00%	564,255	73.75%	69.53%	11.66%	14.79%	1.99%	12.49%	0.12%	12.79%	8.22%
010	765,136	0	0.00%	602,116	78.69%	80.41%	14.31%	6.62%	2.16%	2.55%	0.11%	5.82%	5.11%
011	765,137	1	0.00%	588,771	76.95%	75.67%	13.67%	9.37%	1.98%	7.9%	0.13%	8.85%	7.74%
012	765,136	0	0.00%	588,119	76.86%	59.51%	36.72%	4.87%	1.67%	2.55%	0.22%	4.01%	4.33%
013	765,135	-1	0.00%	576,337	75.32%	41.1%	51.13%	8.01%	1.83%	4.19%	0.14%	7.23%	5.23%
014	765,135	-1	0.00%	591,620	77.32%	88.57%	5.17%	10.02%	2.91%	1.33%	0.1%	8.3%	6.16%

Total: 10,711,908

Ideal District: 765,136

Summary Statistics:

Population Range:	765,135 to 765,137
Ratio Range:	0.00
Absolute Range:	-1 to 1
Absolute Overall Range:	2
Relative Range:	0.00% to 0.00%
Relative Overall Range:	0.00%
Absolute Mean Deviation:	0.57
Relative Mean Deviation:	0.00%
Standard Deviation:	0.70